



SPECIALISED SERVICES

PROFESSIONAL . RELIABLE . INNOVATIVE





OUR SAFETY SYSTEM

The ProVest Group prides itself on having its own internal safety and quality assurance function, staffed with a dedicated team of experts.

We believe that all our employees need to be truly empowered and therefore must know and understand the top five workplace risks and more importantly, how to mitigate Section 22 and Section 23 of the Mine Health and Safety Act.

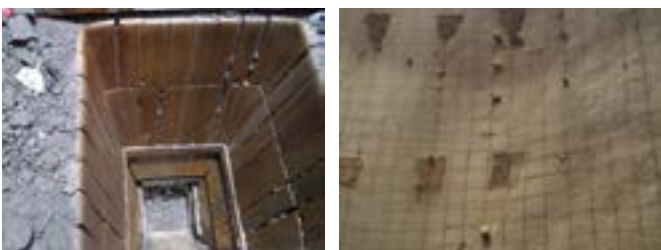
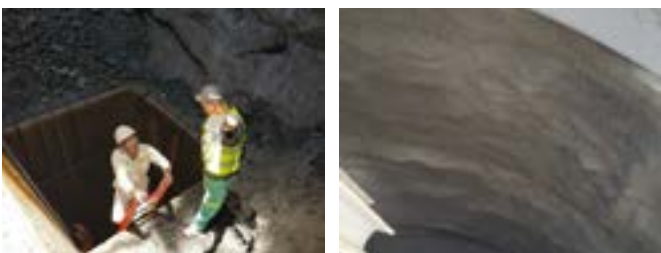
In addition, we promote bottom-up reporting at all times through formal incident reporting. This is not used as a punishment tool, but rather to compile a Pareto Analysis, which identifies areas in which behavior and systems need to improve on a weekly basis whereby these indicators are addressed through planned task observations and "VFLs".

ProVest is extremely proud to be ISO 9001:2015 SACAS accredited for its Quality Management System.

PROFESSIONAL . RELIABLE . INNOVATIVE

STEEL & CONCRETE SILO REHABILITATION

| SURFACE & UNDERGROUND



WHAT ARE SILOS?

Silos are large, thin-walled reinforced concrete shell structures with large diameter and height for storage of grain, cement, coal, and mostly for the Mining materials.

FREQUENT PROBLEMS

- Large vertical and horizontal cracks
- Low concrete strength
- Spalling of concrete
- Construction joints
- Corrosion of re-bars
- Reduction of concrete cover for reinforcement

REASONS

- Concrete deterioration and abrasion
- Overstressing in re-bars
- Construction faults
- Design assumptions
- User errors
- Environmental influences

SERVICES

- Structure repairs
- Reinforcing
- Rail replacements
- Silo cleaning
- Shotcreting of Walls
- Replacing of Liners inside Silo feeders.

PRODUCT

- ProVest has developed an exceptionally strong, durable product that lasts for an exceedingly long period. In addition, the product has the ability to withstand abrasion, the impact of hard materials and extreme weather conditions.
- The product is called HSWR (High Strength Wear Resistant) and has a compressive strength of 70 MPA.
- Silo coating to seal hairline cracks.

REPUTABLE CLIENTS

ProVest has undertaken various silo rehabilitation work for almost all the major mining houses, both surface and underground operations. They include:

- Aquarius Platinum (Surface Silos)
- Impala Platinum (Surface Silos)
- Lonmin Platinum (Surface & Underground Silos)
- Anglo Platinum (Surface Silos)



SPECIALISED CIVIL WORKS



ProVest Specialised Services offer diverse construction services, including, but not limited to: heavy civil construction & infrastructure, general contracting, commercial and industrial facilities construction, site improvement & utilities projects, dam construction and rehabilitation as well as reclamation of shaft and sites after shut-down.

ProVest Specialised Services has the capability to mobilise nationally. The Company possesses capabilities in numerous diverse disciplines, and has developed a reputation for completing projects on time and within budget constraints.

SERVICES

- Structural floor slabs
- Concrete parking lots
- Equipment foundations
- Concrete Remediation
- Sidewalks and stairs
- Concrete tunnels
- Precast concrete walls
- CNC Machining
- Conventional Turning & Milling
- Hydraulic & Pneumatic Cylinder Manufacture, Repair & Rebuild
- 24 Hour on site line boring
- Steel fabrication
- Pump Shaft Repair & Manufacturing
- Bucket Refurbish & Rebuild
- Manufacturing of Pins & Bushes

AUTO ELECTRICAL SERVICES

- Diagnostic repairs (Electronic technician)
- Field service repairs
- Rewiring of earthmoving machines
- Fitment of all electrical parts and products
- Repairs to wiring harnesses
- Automotive diagnostic repairs (Specialist diagnostic machines for all vehicles) etc







PROVEST GROUP

NORTH WEST OPERATIONS

Tel: +27 14 597 3485
E-mail: info@provestgroup.co.za

NORTHERN CAPE OPERATIONS

Tel: +27 14 597 3485
E-mail: info@provestgroup.co.za

EASTERN LIMB OPERATIONS

Tel: +27 13 235 7378
E-mail: info@provestgroup.co.za

PLATCHRO MINING SERVICES

NORTH WEST OPERATIONS

Tel: +27 14 592 6556
E-mail: admin@platchro.co.za

PREMAN MINING SERVICES

LIMPOPO OPERATIONS

Tel: +27 14 785 0291
E-mail: info@provestgroup.co.za

MERENSKY CEMENT SOLUTIONS

EASTERN LIMB OPERATIONS

Tel: +27 76 512 2446
E-mail: martin@merenskycementolutions.co.za

www.provestgroup.co.za